

HS&DR Adult Social Care⁺ Partnership Call



Webinar
11 November 2019

Presenters

Dr Claire Kidgell, Assistant Director, NETSCC
Steph Garfield-Birkbeck, Assistant Director, NETSCC
Victoria Tatton, Experienced Social Work Practitioner,
Ashford Adult Social Care Team, Kent County
Council



Session overview

- Introduction
- The commissioning brief
- A frontline perspective
- Tips for successful applications

Questions

Please type any questions you have as we go along and we will attempt to answer them at the end of the webinar

We will make copies of the slides, questions and answers available following the webinar

About NIHR



- The National Institute for Health Research (NIHR) invests in research to help the NHS and care providers meet the major health and social challenges they face
- NIHR funds research that has the potential to improve the health of patients, the public and health and care services



Purpose of the Call:

- A new initiative by NIHR to complement new and existing research activity in social care
- The purpose of the call is to support the establishment of novel, sustainable partnerships between social care research and practice to improve the effectiveness of decision making
- It is anticipated that partnerships supported through this call will lead to the submission of high-quality proposals to the NIHR research programmes



Activities supported under this partnership may include:

Fostering network and partnership activities between academic research and social care practice

Supporting cross-disciplinary teams of investigators currently working in different disciplines

Enabling capacity building and the development of a critical mass of expertise in social care research

Providing protected research time for front line social care staff

To add to the evidence base on research utilisation and knowledge mobilisation by social workers

To explore linkages between better use of research (alongside other forms of knowledge) and improved organisational performance



Context

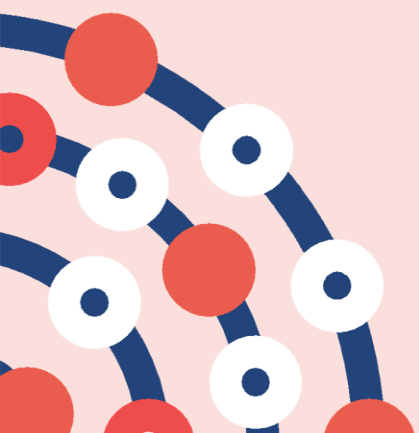


- How to improve the use and implementation of social care research across the UK
- Capacity building across the sector
- Co-production
- Unmet need
- Challenges with sharing knowledge across the sector



Who can apply?

- Lead applicants may be based in any appropriate host institution or organisation within the UK e.g. Local Authorities, NHS or voluntary organisations, Universities and HEIs
- We are interested in supporting partnerships involving practitioners and commissioners at all levels.
- We anticipate that a range of projects in size and scope will then be commissioned. Contracts are likely to be for up to 48 months with an annual review and break point to assess progress including outputs and evaluation during the lifetime of the partnership.
- Resources may be requested to support investigator time, particularly to support protected time for front line staff with justification as to why this is necessary for the partnership. We welcome joint leadership arrangements.



Examples of deliverables:



Pilot work to prepare for an evaluation of an intervention which has been identified by the network which could have national learning for social work colleagues as identified by the front line members of the network.

Develop a method of identifying novel interventions at local level and ways of setting up the interventions in order to enable evaluation later on; developing local method for fast establishment of measures of success and data collection

Connection exercises with existing professional bodies based on learning from evidence

Develop national links with other networks

Develop modes of communication to suit the network's membership and to enable that membership to cascade back to their colleagues

Develop "evaluator in residence" model in a locality, working with front line staff, officers and elected Members to establish routine sharing and use of evidence to inform practice



A frontline perspective



Victoria Tatton

Experienced Practitioner (Social Work)



How can research support social care staff to optimise the delivery of care?



Please always consider:

- Mental Capacity Act
- The Care Act
- Mental Health Act
- Safeguarding
- Budgets/funding
- Current structures

Find interventions that are working well (and not so well!)

Make it easier for us to get our hands on the findings

Approach care providers directly

Practical outcomes



How does having research available aid decision making?



- Provides rationale and confidence for practitioners
- Enables authorisers/managers to know public money is being used appropriately
- Gives confidence to users of care and the people supporting them
- Can give a decision



Why should social care staff be involved in research?



- Because so many social care staff are not...
- Confidence
- We know what the issues are!
- Clients (hopefully) trust their worker
- Access to MDT opportunities



General Points



- Lead applicants may be based in any appropriate host institution or organisation within the UK e.g. Local Authorities, NHS or voluntary organisations, Universities and HEIs
- Service user involvement
- No upper limit on requested costs; all proposals will be assessed for value for money and all costs should be justified
- We aim to commission multiple studies from this call
- Applicants will be eligible from across the UK



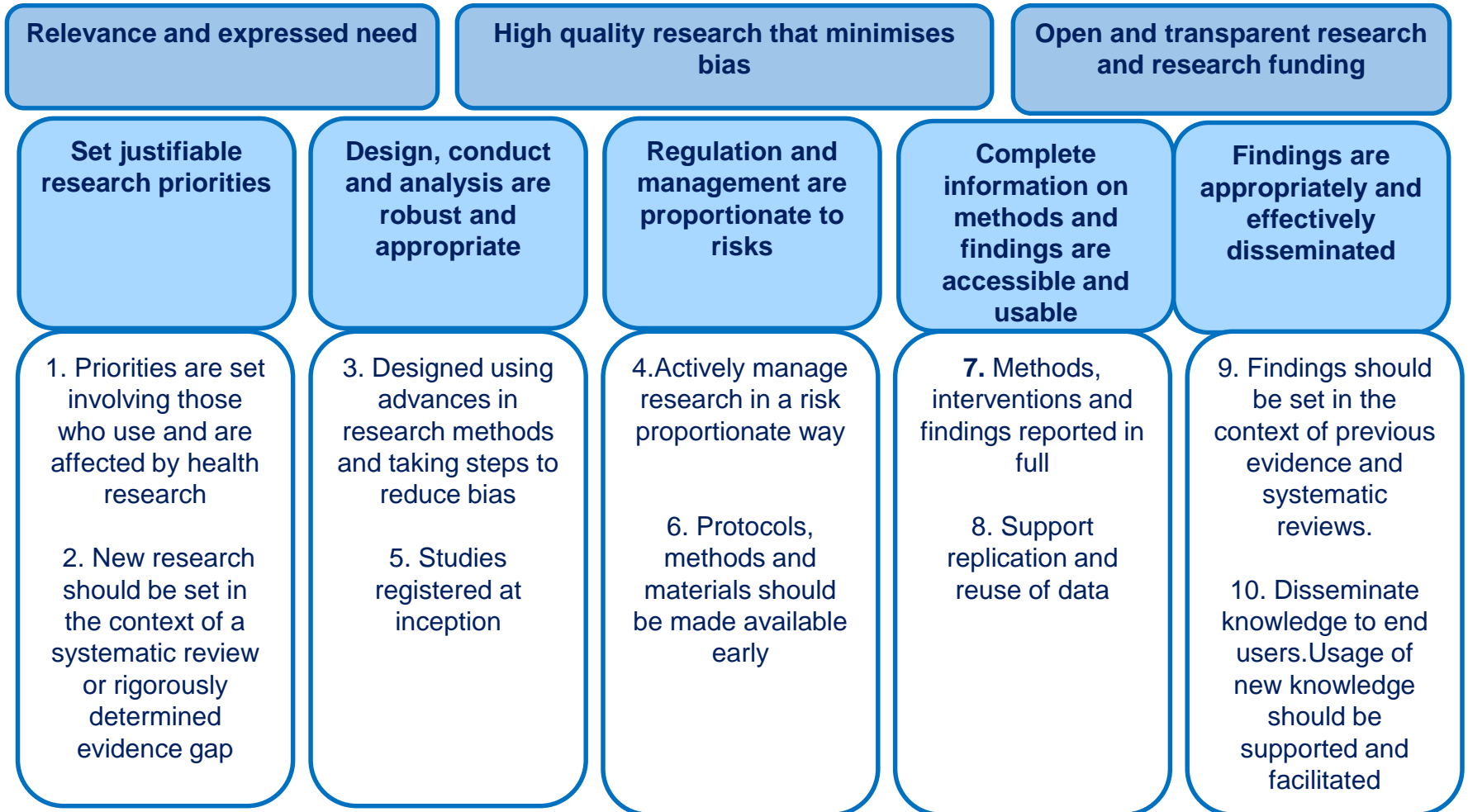


How to make a good application to the programme



NIHR Adding Value in Research Framework

Raising the probability of benefits to society from health-related research for the tangible and intangible costs involved



Basic Principles: Importance of the research

- Justification for the research – there is an end user
- Likelihood that the intervention, technology, or service will be commissioned
 - A clear trajectory, for instance through the make-up of the research team, especially in respect of commissioner
 - Working with people with lived experience
 - Consideration of fit in existing pathways
 - Plans for dissemination and formative learning
- Likelihood of practice change and how that will be achieved
 - On-going and end-of-grant dissemination plan
 - Service-readiness

Basic Principles: Quality of the Research:

Are the methods appropriate – are they the most likely approach to answer the question?

Is the research being undertaken *where* there is the greatest need?

It is the right team – breadth of expertise

Embedded evidence users – PPI and other decision-makers involved throughout the research process including dissemination activities

Value for money – it is likely to make a difference and costs are fully justified



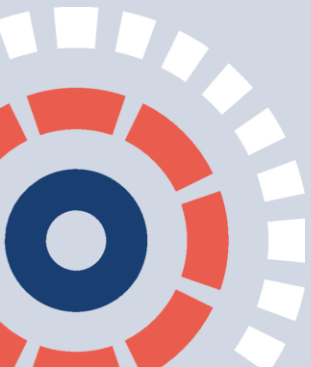
Common Pitfalls (1)

The research question is not clear

The intervention is poorly described

Existing work is not referred to

The plan for research is not clear – coherence of narrative linking back to the aims and objectives is missing



Common Pitfalls (2)

The framework for the research or the hypothesis underpinning the research is unclear or missing

The difference the proposed research will make is not well explained – to whom and how

The range of expertise on the team is not wide enough to carry out the research convincingly

The logical plan of analysis which will mesh the different elements of the research is missing



Tips for Applicants (1)



Check the remit of the programme and the call

Make the case for the importance and likely difference the research will make to evidence users

Identify the problem clearly and embed the proposed research in what is already known

Make sure the research question is very clear

Justify the chosen methodology



Tips for Applicants (2)

Avoid jargon, explain abbreviations, acronyms



Remember, the reader might not be an expert in the detail of the field

Project management is important

Think about the possible vulnerabilities of the work – what is going to put it at risk and how will those risks be mitigated?

Work with clinical trials units, the Research Design Service, other parts of the NIHR

Keep it simple – do not over-engineer



Stage 1 applications



- These will be considered for remit and competitiveness.
- Applications will be declined or invited to submit a stage 2 application.
- All applicants will receive feedback around mid-January.
- Support will be offered to all shortlisted applicants – either a writing workshop or individual teleconference depending on numbers.



Stage 2 applications



- If shortlisted you will have about 8-10 weeks to produce a second stage application
- Stage 2 applications will be peer reviewed and you will have the chance to respond to any queries raised by applicants
- Applications will then be considered by the HS&DR funding committee and a recommendation to fund or not is made – if funded usually fund with changes



How to make a good stage 2 application



- At stage 1 – feedback received from the programme is meant to be helpful
- Applicants should ensure they respond fully to all areas highlighted in the feedback
- Proof read – errors in application lead to reduced confidence in the team – ensure changes made between first and second stage application are consistent throughout



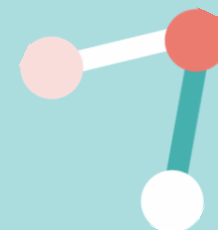
Further support for researchers



The HS&DR team are happy to provide support with completing the application form and navigating our online application system (NETSCC-MIS)

Please do not hesitate to get in touch via HSDRinfo@nihr.ac.uk or 02380594304





Apply by 1pm on 16th Jan 2020

GOOD LUCK!

